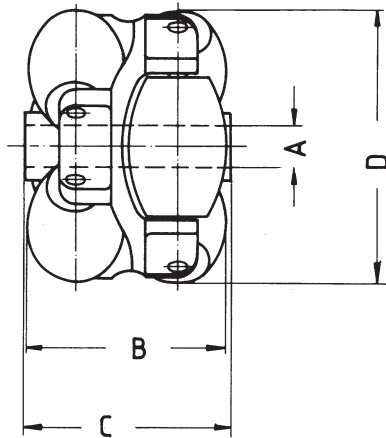




Universal Roller

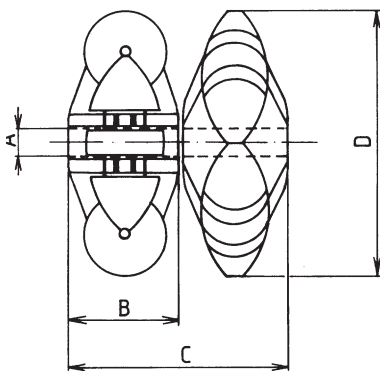
Type 620



Plastic, one piece

D	40	48	60	80
A	8	8	8	8
B	26	37	47	60
C	29	39	48	64

Type 625



Plastic, two piece

D	50	60	80
A	8	8	8
B	19,5	25	30
C	39	51	60

Universal roller are used where packing drums, load carrier, packages, cartons or work pieces have to be turned, assorted, diverted, supplied or commissioned. The size and the weight of the load regulate the pitch. Table surfaces of any sizes can be equipped with Universal Roller. Following individual load capacities each roller should not be exceeded:

- Ø 50 mm 100 daN (kg)
- Ø 60 mm 200 daN (kg)
- Ø 80 mm 400 daN (kg)

The universal roller can be used at a temperature range between -12° C and +80°C.

The universal rollers always have to be installed in main transport direction, as the resistance of the other roller is slightly higher.

If equal resistances should be received in all directions, wheels have to be mounted staggered at 90°