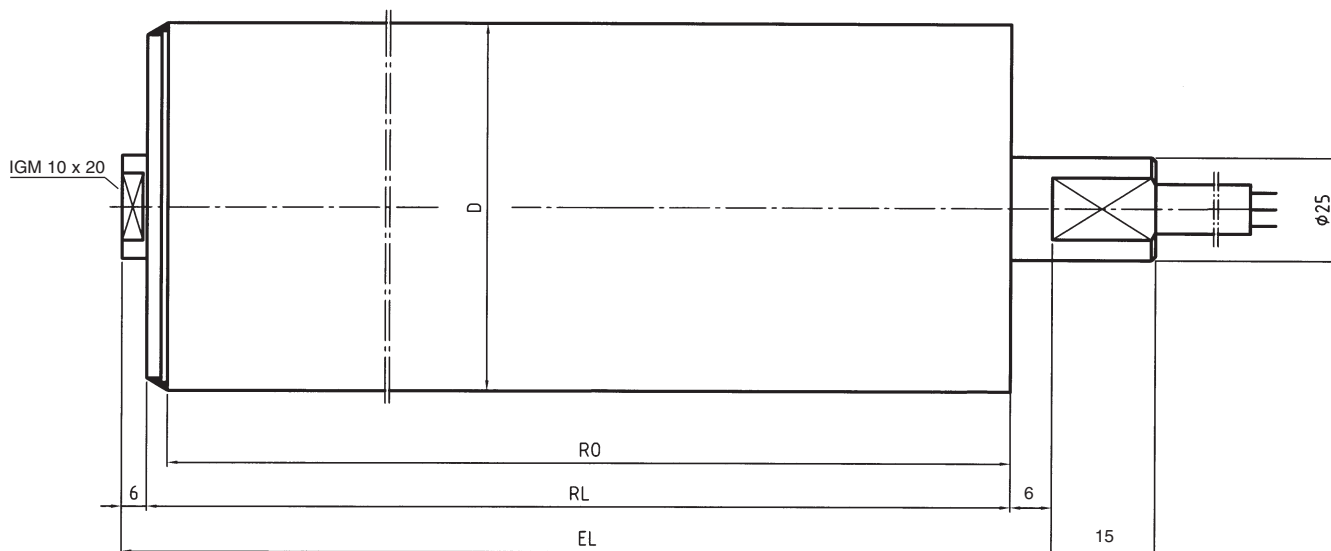
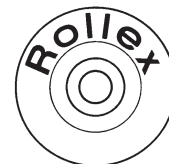


Type 850 - 89



The Rollex-Drum-Motor Type 850 - 89 can be used for all pallet-transportations.

The Drum-Motor has following specifications:

Motor Variation	Voltage in V	Rated Current in A	Frequency in Hz	Power in kW	Speed in m/s	Torque Nm	Peripheral Force N
Variante I	230/400	0,59/0,34	50	0,12	0,24	21,1	475
Variante II	230/400	0,59/0,34	50	0,12	0,34	14,7	331

The different variations result from the two Speed-Variations.

The Drum-Motor is an Asynchronous Motor, that is available for the following voltages:

3 x 400V/50Hz (Motor is Star(Y) connected)

3 x 230V/50Hz (Motor is Delta(Δ) connected)

Cables can be supplied with straight- or angled screw coupling.

Break:

The Drum-Motor can be supplied with an internal Break, that is prepared for Start-Stop.

The Starting Torque depends on the oil volume, temperature of the surrounding and working temperature of the Motor.

The Drum-Motor can be used in Deep-Freeze Areas of -30° C, if the Motor is equipped with an anti-condensation heating.